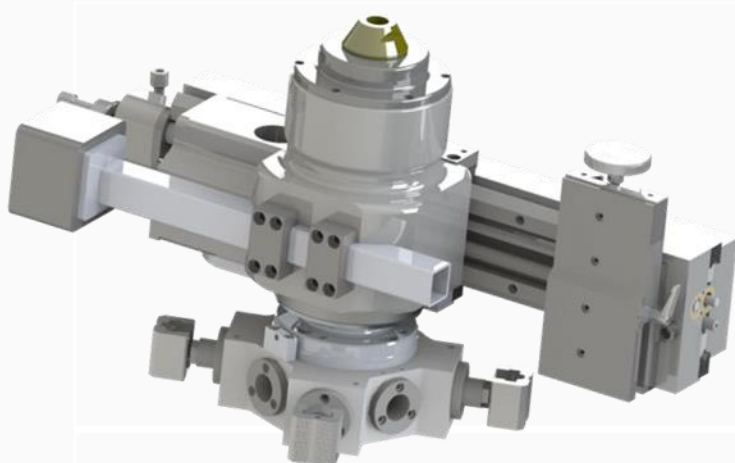


Bore Mount Flange Facing Machine 8-42" (203 - 1066mm)



KEY FEATURES

- Heavy duty precision construction
- High torque planetary gear drive
- 3 continuous groove bi-directional facing feeds for a gramophone finish (ASME Standard).
- Auto boring feeds
- Heavy duty adjustable base clamping bolts and extensions for quick set site operation
- Large section hardened slide ways to maintain long term accuracy
- 360 degree swivel tool post for groove details

DESCRIPTION

An internally mounted flange facing machine capable of producing a continuous groove gramophone finish to ASME Standard along with the capability to auto feed groove details

SPECIFICATION

Min Facing Diameter	6" (153mm)
Max Facing Diameter	42" (1066mm)
Min Clamp Diameter	7 7/8" (147mm)
Max Clamp Diameter	32" (813mm)
Tool Post travel	4" (102mm)
RPM	30
Pneumatic	1.1Hp @ 6 Bar 67 CFM

W&Ds

Machine Weight	115kg	inc base	253 lbs
Shipping Weight	218kgs		479 lbs
Shipping Dimension	Length	Width	Height
1 Pelican Air box	87cms	56cms	71cms

FACING FEED RATES & GROOVES PER INCH

Direction	Gear	mm/rev	Inches/rev	Grooves/inch
FACING In / Out	1	0.32	0.005	76
	2	0.51	0.009	49
	3	0.68	0.021	37
BORING Up / Down	1	0.08	0.006	317
	2	0.12	0.010	211
	3	0.16	0.025	158

INCLUDED AS STANDARD WITH MACHINE

The machine is supplied complete with the following items;

- ✓ All clamping feet, mounting plates
- ✓ Toolkit including tools and inserts
- ✓ Air filter lubricator
- ✓ Hose connection
- ✓ Storage / shipping box
- ✓ Packing list and manual