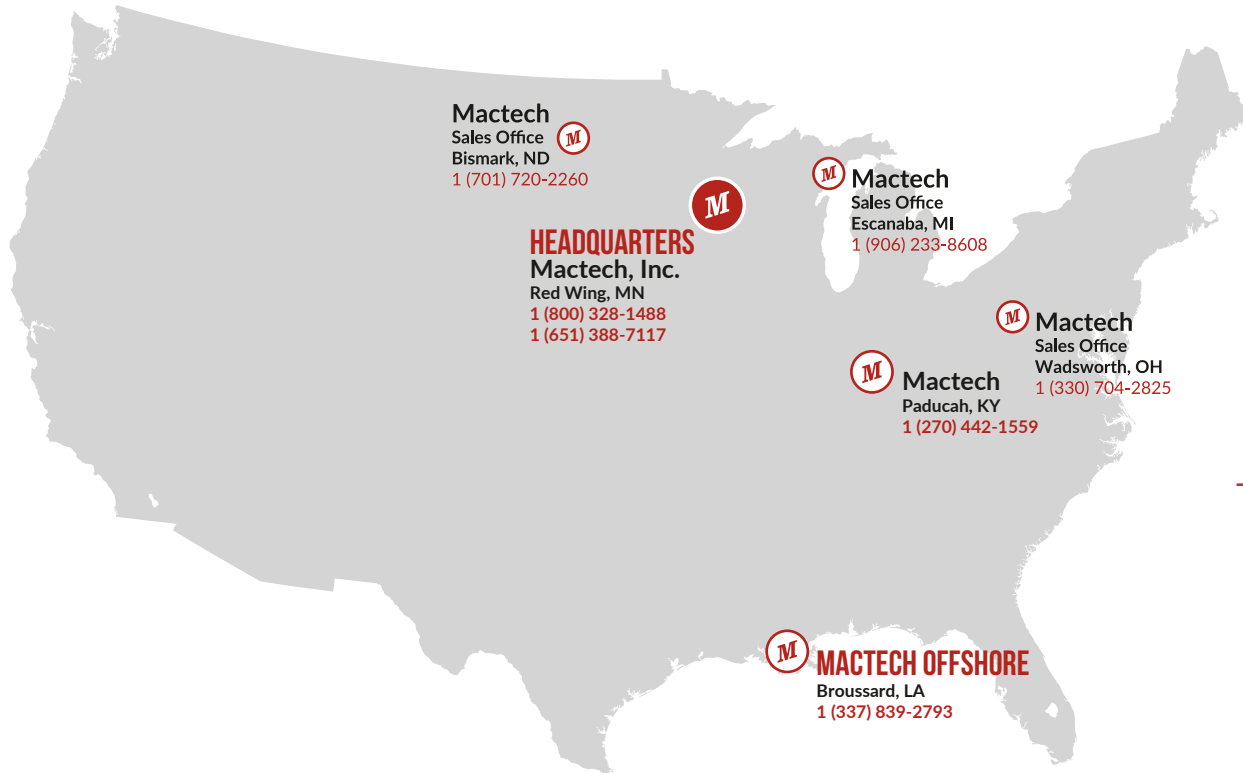


MACTECH

DIAMOND WIRE SAW OVERVIEW

MACTECHOFFSHORE.COM



WORLDWIDE SUPPLIERS AND SERVICE

Mactech proudly has representation across the globe.

For more information on connecting with your nearest sales agent, contact us at:

info@mactechoffshore.com

1 (337) 839-2793



Unique Group



MACTECH

FOUNDED IN 1974

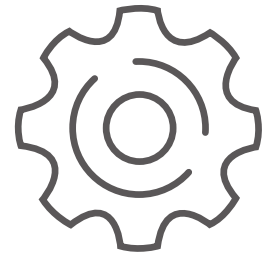
STRATEGICALLY LOCATED THROUGHOUT THE U.S.

WITH FIVE INTERNATIONAL DISTRIBUTION PARTNERS

- ▶ 40 Full-time technicians
- ▶ 6 Full-time engineering staff
- ▶ 500+ On-site machine tools
- ▶ 50+ Rental Diamond Wire Saws
- ▶ In-house production of equipment and tooling
- ▶ Around the clock manufacturing capability
- ▶ Sales, Rental, and Service



40+ TECHNICIANS



500+ MACHINE TOOLS

MACTECH OFFSHORE PROVEN PROCESS

WITH OVER 45 YEARS OF EXPERIENCE IN THE FIELD MACHINING SERVICE INDUSTRY, WE CREATED THESE SIX STEPS TO ENSURE A SUCCESSFUL EXECUTION FROM START TO FINISH

1. Define the scope of the project clearly
2. Create a best-value plan for the projects completion
3. Communicate and confirm the recommendation
4. Schedule and coordinate all required resources
5. Execute the plan and be ready to adapt with open communication through completion
6. Continuous improvement review

WHAT MAKES MACTECH OFFSHORE UNIQUE?



EXCEPTIONAL PEOPLE AND EQUIPMENT



PASSIONATE CUSTOMER COMMITMENT



EXPERTISE FROM EXPERIENCE

OFFSHORE CUTTING SOLUTIONS

PROVIDING VALUE BY SOLVING PROBLEMS THROUGH EXPERIENCE

- ▶ Offshore and Onshore Oil & Gas
- ▶ Marine Construction
- ▶ Civil & Heavy Construction
- ▶ Cutting, drilling, and machining solutions



DIAMOND WIRE SAW OVERVIEW

For surface and underwater cutting of almost any material

- ▶ Cutoff / Inline / Articulating
- ▶ Cutting range of 4.5" to 120"
- ▶ ROV compatible configurations on some models
- ▶ Standard automatic feed on many models



CUTOFF DIAMOND WIRE SAWS

Compact, lightweight design for tight spaces

- ▶ 2 Models available
- ▶ Cutting range 4.5” to 24”
- ▶ Automatic feed available
- ▶ ROV Package available soon



DWS-16co-SS

CUTOFF

PART# 607-0019-SS

SPECIFICATIONS

| | |
|----------------------|------------------------------|
| Cutting Capacity | Ø 4.5" - Ø 16" |
| | Ø 114 - Ø 406mm |
| Operating Dimensions | 44" x 41" x 11" |
| | 1117 x 1041 x 279mm |
| Operating Weight | (Dry) 210 lbs / (Wet) 150lbs |
| | (Dry) 95kg / (Wet) 68kg |

HYDRAULIC REQUIREMENTS

| | |
|-------|-------------------|
| Drive | 15 gpm @ 3000 psi |
| | 57 lpm @ 207 bar |
| Feed | .5 gpm @ 500 psi |
| | 2 lpm @ 30 bar |
| Clamp | .5 gpm @ 1500 psi |
| | 2 lpm @ 103 bar |

- ▶ Cutoff Saw
- ▶ Stainless Steel Fasteners & Fittings



All dimensions and hydraulic requirements are for reference and may be subject to change without notice. Machine performance is subject to application and operator capability; please discuss your requirements directly with a Mactech sales representative. All information given and all sales made by Mactech Inc. are subject to their terms and conditions.



DWS-24co-SS

CUTOFF

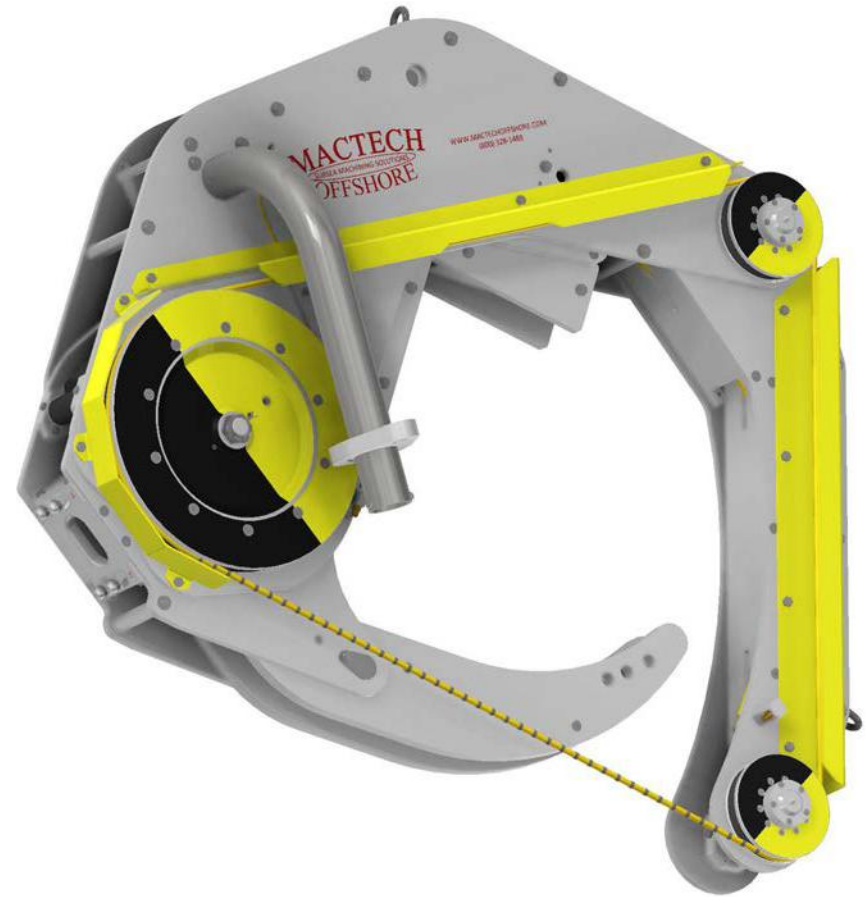
PART# 607-0095-SS

SPECIFICATIONS

| | |
|----------------------|------------------------------|
| Cutting Capacity | Ø 10" - Ø 24" |
| | Ø 102 - Ø 610mm |
| Operating Dimensions | 61" x 53" x 18" |
| | 1526 x 1445 x 408mm |
| Operating Weight | (Dry) 345 lbs / (Wet) 220lbs |
| | (Dry) 156kg / (Wet) 100kg |

HYDRAULIC REQUIREMENTS

| | |
|-------|-------------------|
| Drive | 15 gpm @ 3000 psi |
| | 57 lpm @ 207 bar |
| Feed | .5 gpm @ 500 psi |
| | 2 lpm @ 34 bar |
| Clamp | .5 gpm @ 1500 psi |
| | 2 lpm @ 103 bar |



- ▶ Cutoff Saw
- ▶ Stainless Steel Fasteners & Fittings

All dimensions and hydraulic requirements are for reference and may be subject to change without notice. Machine performance is subject to application and operator capability; please discuss your requirements directly with a Mactech sales representative. All information given and all sales made by Mactech Inc. are subject to their terms and conditions.



INLINE DIAMOND WIRE SAWS

Our largest cutting range and most versatile design to suit most applications

- ▶ 7 models available
- ▶ Cutting range of 14" to 120"
- ▶ ROV compatible options
- ▶ Standard automatic feed



DWS-30i-AF-SS

INLINE

PART# 607-0132-SS

SPECIFICATIONS

| | |
|----------------------|------------------------------|
| Cutting Capacity | Ø 14" - Ø 30" |
| | Ø 356 - Ø 762mm |
| Operating Dimensions | 94" x 64" x 40" |
| | 2388 x 1626 x 1016mm |
| Operating Weight | (Dry) 950 lbs / (Wet) 696lbs |
| | (Dry) 431kg / (Wet) 315kg |

HYDRAULIC REQUIREMENTS

| | |
|-------|-------------------|
| Drive | 15 gpm @ 3000 psi |
| | 57 lpm @ 207 bar |
| Feed | .5 gpm @ 650 psi |
| | 2 lpm @ 49 bar |
| Clamp | .5 gpm @ 1500 psi |
| | 2 lpm @ 103 bar |



- ▶ **Inline Saw**
- ▶ **Stainless Steel Fasteners & Fittings**
- ▶ **Automatic Feed Operation**

All dimensions and hydraulic requirements are for reference and may be subject to change without notice. Machine performance is subject to application and operator capability; please discuss your requirements directly with a Mactech sales representative. All information given and all sales made by Mactech Inc. are subject to their terms and conditions.



DWS-48i-AF-SS

INLINE

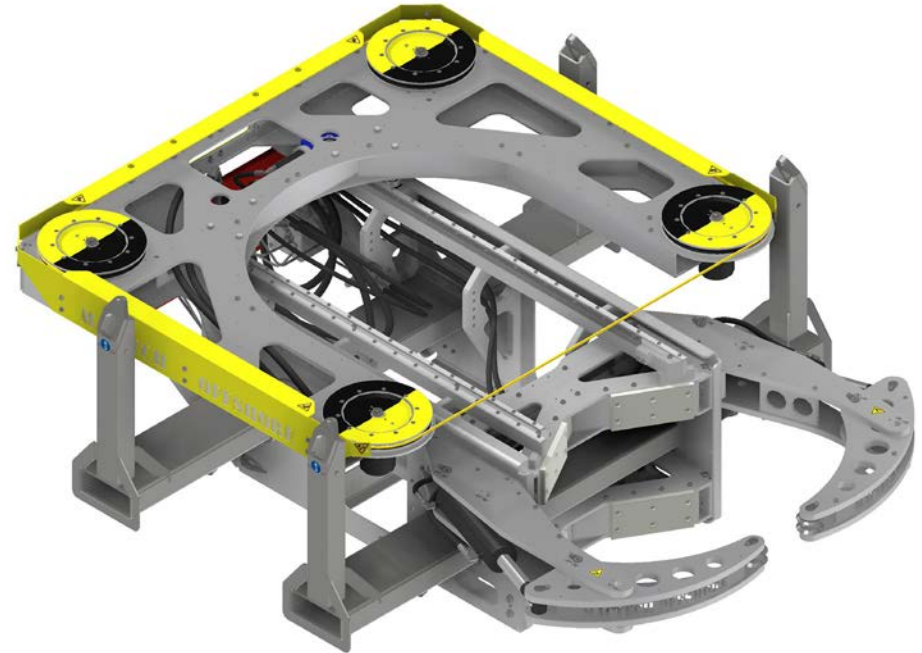
PART# 607-0209

SPECIFICATIONS

| | |
|----------------------|--------------------------------|
| Cutting Capacity | Ø 20" - Ø 48" |
| | Ø 508 - Ø 1219mm |
| Operating Dimensions | 134" x 94" x 43" |
| | 3403 x 2387 x 1092mm |
| Operating Weight | (Dry) 2150 lbs / (Wet) 1600lbs |
| | (Dry) 975kg / (Wet) 726kg |

HYDRAULIC REQUIREMENTS

| | |
|-------|-------------------|
| Drive | 15 gpm @ 3000 psi |
| | 57 lpm @ 207 bar |
| Feed | .5 gpm @ 650 psi |
| | 2 lpm @ 49 bar |
| Clamp | .5 gpm @ 1500 psi |
| | 2 lpm @ 103 bar |



- ▶ **Inline Saw**
- ▶ **Stainless Steel Fasteners & Fittings**
- ▶ **Automatic Feed Operation**

All dimensions and hydraulic requirements are for reference and may be subject to change without notice. Machine performance is subject to application and operator capability; please discuss your requirements directly with a Mactech sales representative. All information given and all sales made by Mactech Inc. are subject to their terms and conditions.



DWS-48i-ROV-SS

INLINE

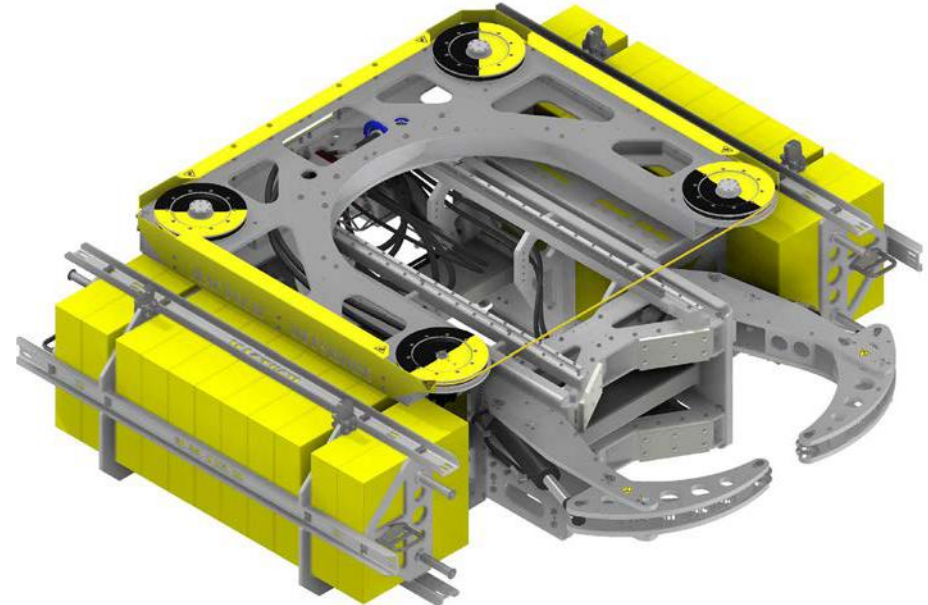
PART# 607-0323

SPECIFICATIONS

| | |
|----------------------|------------------------------|
| Cutting Capacity | Ø 20" - Ø 48" |
| | Ø 508 - Ø 1219mm |
| Operating Dimensions | 139" x 124" x 38" |
| | 3525 x 3150 x 968mm |
| Operating Weight | (Dry) 4500 lbs / (Wet) 20lbs |
| | (Dry) 2041kg / (Wet) 9kg |

HYDRAULIC REQUIREMENTS

| | |
|-------|-------------------|
| Drive | 15 gpm @ 3000 psi |
| | 57 lpm @ 207 bar |
| Feed | .5 gpm @ 650 psi |
| | 2 lpm @ 49 bar |
| Clamp | .5 gpm @ 1500 psi |
| | 2 lpm @ 103 bar |



- ▶ Inline Saw
- ▶ Stainless Steel Fasteners & Fittings
- ▶ Automatic Feed Operation
- ▶ ROV Handles, Hot Stabs, Compensator, and Buoyancy Package

All dimensions and hydraulic requirements are for reference and may be subject to change without notice. Machine performance is subject to application and operator capability; please discuss your requirements directly with a Mactech sales representative. All information given and all sales made by Mactech Inc. are subject to their terms and conditions.



DWS-60i-AF-SS

INLINE

PART# 607-0004

SPECIFICATIONS

| | |
|----------------------|--------------------------------|
| Cutting Capacity | Ø 26" - Ø 60" |
| | Ø 660 - Ø 1524mm |
| Operating Dimensions | 182" x 98" x 55" |
| | 4622 x 2489 x 1397mm |
| Operating Weight | (Dry) 2600 lbs / (Wet) 1785lbs |
| | (Dry) 1180kg / (Wet) 810kg |

HYDRAULIC REQUIREMENTS

| | |
|-------|-------------------|
| Drive | 15 gpm @ 3000 psi |
| | 57 lpm @ 207 bar |
| Feed | .5 gpm @ 1000 psi |
| | 2 lpm @ 69 bar |
| Clamp | .5 gpm @ 1500 psi |
| | 2 lpm @ 103 bar |



- ▶ **Inline Saw**
- ▶ **Stainless Steel Fasteners & Fittings**
- ▶ **Automatic Feed Operation**

All dimensions and hydraulic requirements are for reference and may be subject to change without notice. Machine performance is subject to application and operator capability; please discuss your requirements directly with a Mactech sales representative. All information given and all sales made by Mactech Inc. are subject to their terms and conditions.



DWS-84i-AF-SS

INLINE

PART# 607-0161

SPECIFICATIONS

| | |
|----------------------|--------------------------------|
| Cutting Capacity | Ø 36" - Ø 84" |
| | Ø 914 - Ø 2134mm |
| Operating Dimensions | 237" x 144" x 79" |
| | 6031 x 3661 x 1998mm |
| Operating Weight | (Dry) 4300 lbs / (Wet) 3000lbs |
| | (Dry) 1950kg / (Wet) 1360kg |

HYDRAULIC REQUIREMENTS

| | |
|-------|-------------------|
| Drive | 40 gpm @ 3000 psi |
| | 151 lpm @ 207 bar |
| Feed | .5 gpm @ 1000 psi |
| | 2 lpm @ 69 bar |
| Clamp | .5 gpm @ 1500 psi |
| | 2 lpm @ 103 bar |



- ▶ Inline Saw
- ▶ Stainless Steel Fasteners & Fittings
- ▶ Automatic Feed Operation
- ▶ ROV Package Available Soon

All dimensions and hydraulic requirements are for reference and may be subject to change without notice. Machine performance is subject to application and operator capability; please discuss your requirements directly with a Mactech sales representative. All information given and all sales made by Mactech Inc. are subject to their terms and conditions.



DWS-102i-AF-SS

INLINE

PART# 607-0301

SPECIFICATIONS

| | |
|----------------------|--------------------------------|
| Cutting Capacity | Ø 48" - Ø 102" |
| | Ø 1016 - Ø 2591mm |
| Operating Dimensions | 175" x 140" x 78" |
| | 4445 x 3556 x 1981mm |
| Operating Weight | (Dry) 3100 lbs / (Wet) 2100lbs |
| | (Dry) 1406kg / (Wet) 953kg |

HYDRAULIC REQUIREMENTS

| | |
|-------|-------------------|
| Drive | 40 gpm @ 3000 psi |
| | 151 lpm @ 207 bar |
| Feed | .5 gpm @ 1000 psi |
| | 2 lpm @ 69 bar |
| Clamp | N / A |
| | N / A |



- ▶ Inline Saw
- ▶ Stainless Steel Fasteners & Fittings
- ▶ Automatic Feed Operation

All dimensions and hydraulic requirements are for reference and may be subject to change without notice. Machine performance is subject to application and operator capability; please discuss your requirements directly with a Mactech sales representative. All information given and all sales made by Mactech Inc. are subject to their terms and conditions.



DWS-120i-AF-SS

INLINE

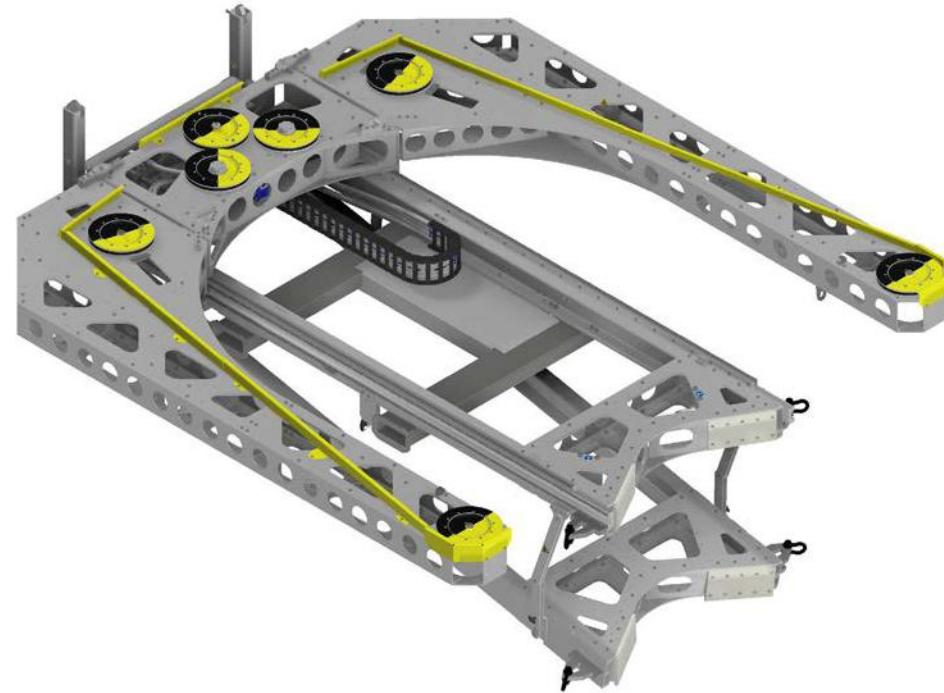
PART# 607-0120

SPECIFICATIONS

| | |
|----------------------|--------------------------------|
| Cutting Capacity | Ø 48" - Ø 120" |
| | Ø 1219 - Ø 3048mm |
| Operating Dimensions | 197" x 159" x 78" |
| | 5004 x 4038 x 1981mm |
| Operating Weight | (Dry) 3500 lbs / (Wet) 2450lbs |
| | (Dry) 1406kg / (Wet) 953kg |

HYDRAULIC REQUIREMENTS

| | |
|-------|-------------------|
| Drive | 40 gpm @ 3000 psi |
| | 151 lpm @ 207 bar |
| Feed | .5 gpm @ 1000 psi |
| | 2 lpm @ 69 bar |
| Clamp | N / A |
| | N / A |



- ▶ **Inline Saw**
- ▶ **Automatic Feed Operation**
- ▶ **Stainless Steel Fasteners & Fittings**

All dimensions and hydraulic requirements are for reference and may be subject to change without notice. Machine performance is subject to application and operator capability; please discuss your requirements directly with a Mactech sales representative. All information given and all sales made by Mactech Inc. are subject to their terms and conditions.



ARTICULATING DIAMOND WIRE SAWS

Specialty saws for cutting in excavations and space with low axial clearance

- ▶ 2 models available
- ▶ Cutting range of 22” to 60”
- ▶ Purpose built for cutting below the mudline
- ▶ Compact footprint minimizes excavation time and dredging requirements



DWS-40a-AF-SS

ARTICULATING

PART# 620-7900

SPECIFICATIONS

| | |
|----------------------|--------------------------------|
| Cutting Capacity | Ø 22" - Ø 40" |
| | Ø 508 - Ø 1016mm |
| Operating Dimensions | 67" x 105" x 86" |
| | 1702 x 2667 x 2184mm |
| Operating Weight | (Dry) 2140 lbs / (Wet) 1790lbs |
| | (Dry) 1161kg / (Wet) 812kg |

HYDRAULIC REQUIREMENTS

| | |
|-------|-------------------|
| Drive | 15 gpm @ 3000 psi |
| | 57 lpm @ 207 bar |
| Feed | .5 gpm @ 1000 psi |
| | 2 lpm @ 69 bar |
| Clamp | .5 gpm @ 1500 psi |
| | 2 lpm @ 103 bar |

- ▶ Articulating Saw
- ▶ Stainless Steel Fasteners & Fittings
- ▶ Automatic Feed Operation



All dimensions and hydraulic requirements are for reference and may be subject to change without notice. Machine performance is subject to application and operator capability; please discuss your requirements directly with a Mactech sales representative. All information given and all sales made by Mactech Inc. are subject to their terms and conditions.

DWS-60a-SS

PART# 607-0084

ARTICULATING

SPECIFICATIONS

| | |
|----------------------|--------------------------------|
| Cutting Capacity | Ø 26" - Ø 60" |
| | Ø 660 - Ø 1524mm |
| Operating Dimensions | 113" x 109" x 128" |
| | 2870 x 2769 x 3251mm |
| Operating Weight | (Dry) 3275 lbs / (Wet) 2158lbs |
| | (Dry) 1485kg / (Wet) 980kg |

HYDRAULIC REQUIREMENTS

| | |
|-------|-------------------|
| Drive | 40 gpm @ 3000 psi |
| | 151 lpm @ 207 bar |
| Feed | .5 gpm @ 1500 psi |
| | 2 lpm @ 103 bar |
| Clamp | .5 gpm @ 1500 psi |
| | 2 lpm @ 103 bar |

- ▶ Articulating Saw
- ▶ Stainless Steel Fasteners & Fittings



All dimensions and hydraulic requirements are for reference and may be subject to change without notice. Machine performance is subject to application and operator capability; please discuss your requirements directly with a Mactech sales representative. All information given and all sales made by Mactech Inc. are subject to their terms and conditions.



RENT FROM MACTECH



COST EFFECTIVE

Renting is less capital intensive than a full product purchase



HANDS-ON EXPERIENCE

Your team gets a chance to handle the equipment before making a purchase decision



FLEET MAINTENANCE

You have access to a fleet of products that are maintained and ready to go

WE HAVE AN EXTENSIVE FLEET OF RENTAL MACHINES AVAILABLE:

- ▶ 200+ Clamshell pipe cutting machines 2"-110"
- ▶ 40+ Diamond Wire Saws
- ▶ 100+ Portable Drills - up to morse #5 taper
- ▶ 25+ Flange facing machines 1" - 240"
- ▶ 10 Shaft lathes 1"-24"
- ▶ 30+ Line boring machines 3/4" - 10" diameter
- ▶ 50+ Portable milling machines - XYZ, gantry, boring

For more information on rentals, contact us at:

info@mactechoffshore.com

1 (337) 839-2793

INDUSTRIES WE KNOW

OFFSHORE OIL & GAS

Offshore decommissioning

Jacket & pipeline cutting

Pipeline removal

Slot recovery & conductor removal

Stud & lockpin removal

Flange refacing



CIVIL & HEAVY CONSTRUCTION

Foundation pile cutting

Core drilling

Steel & concrete cutting

Onsite machining



MARINE CONSTRUCTION

Cut piles to grade

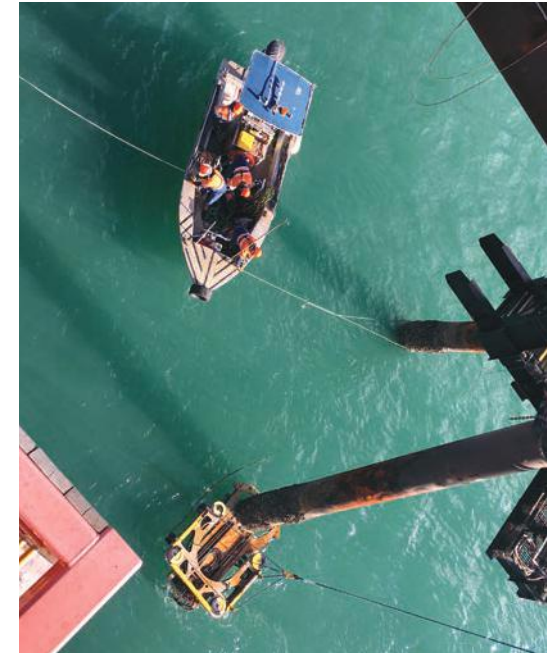
Caisson cutting

Bridge removal

Internal pile cutting

Core drilling

Steel & concrete cutting



AT MACTECH:

Our equipment is maintained by...

Our machines are packed and tooled by...

Our project recommendations are supported by...

Our new product design input is collected by...

Our gear is tested and proven by...

EXPERIENCED OFFSHORE TECHNICIANS

Let's work together

We are your strategic subsea cutting partner

MI





MACTECHOFFSHORE.COM

☎ 1 (337) 839-2793

✉ info@mactechoffshore.com