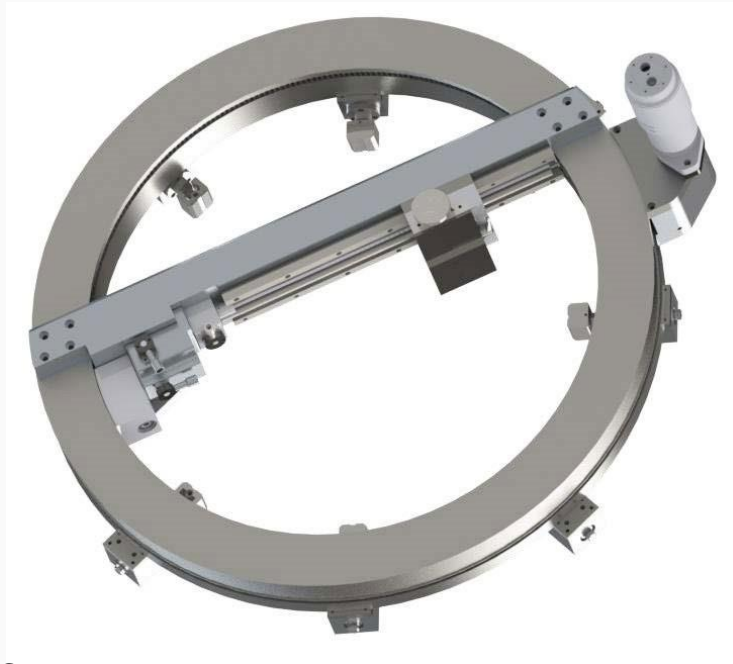


Universal Flange Facing – Outside Mount 150mm to 2000mm



KEY FEATURES

- Fine and Course Automatic Feed Rates which creates ASME B16.5 standard finish
- 2 Speed drive housing – RPM 1:2
- Automatic axial feed on tool post
- Drive - Pneumatic, Hydraulic, or Electric Servo motor.
- Efficient Set Up, quick mount and radial clamping
- Axial adjustment on 4 off feet to jack adjust and set the machine easily to flange face
- Ridged bearing which provides heavy duty cutting with precise accuracy
- Heat exchanger kits available for the machine to carry out back facing and division slot machining

Description

A range of externally mounted flange facing machines that creates the relevant surface finish across joint faces, a continuous gramophone groove that conforms to ASME Standard

Applications

Facing all types of flanges, RTJ Grooves, Hubs and large plant assemblies, heat exchangers, pumps, slew rings and other large flanges such as crane pedestals



Universal Facing – Outside Mount on Flanges 150mm to 2000mm

Specification

Model no.	Drive Type	Clamping Diameter Min - Max	Facing Diameter Min - Max	Clamping Locators	Tool Post Stroke X-axis	Tool Post Stroke Z-axis	Feed Rates X & Y-axis Per rev.	Max RPM
UFO16P	Pneumatic	152 - 457 mm (6" - 18")	0 - 406 mm (0 - 16")	6	0 - 254 mm (0 - 8")	0 - 101.6 mm (0 - 4")	0.25 - 0.5 mm (.004-.020")	82
UFO16H	Hydraulic							
UFO16E	Electric							
UFO24P	Pneumatic	304 - 660 mm (12" - 26")	0 - 610mm (0 - 24")	6	0 - 356mm (0 - 12")	0 - 101.6 mm (0 - 4")	0.25- 0.5mm (.004-.020")	60
UFO24H	Hydraulic							
UFO24E	Electric							
UFO36P	Pneumatic	610 - 966mm (24" - 38")	0 - 915 mm (0 - 36")	8	0 -458mm (0 - 18")	0 - 101.6 mm (0 - 4")	0.25- 0.5mm (.004-.020")	35
UFO36H	Hydraulic							
UFO36E	Electric							
UFO48P	Pneumatic	915 - 1270mm (36" - 50")	0 - 1220 mm (0 - 48")	8	0 -610 mm (0 - 24")	0 - 101.6 mm (0 - 4")	0.25- 0.5 mm (.004-.020")	22
UFO48H	Hydraulic							
UFO48E	Electric							
UFO60P	Pneumatic	1220 - 1524 mm (48" - 62")	0 - 1524 mm (0 - 60")	10	0 -762 mm (0 - 30")	0 - 101.6 mm (0 - 4")	0.25- 0.5 mm (.004-.020")	15
UFO60H	Hydraulic							
UFO60E	Electric							
UFO80P	Pneumatic	1524 - 2082mm (60 - 82")	0 - 2032mm (0 - 80")	12	0 -1016 mm (0 - 40")	0 - 101.6 mm (0 - 4")	0.25- 0.5 mm (.004-.020")	6
UFO80H	Hydraulic							
UFO80E	Electric							

Note: All Above data is for a standard issue machine, any specification outside of the parameters shown can be considered and where possible extended to suit requirement. Ie Feed rate can be increased if desired.
 Supply required: Pneumatic - Air pressure at 6.2 bar (90 CFM); Hydraulic - 30 lpm at 550 bar (800 psi); Electric - 220V, 50-60Hz.

The Feed Rates and standard to comply with ASME B16.5 surface finish on flanges, a continuous feed that spirals and provides the relevant groove per inch for the gasket face. 'Gramophone Finish'

Universal Flange Facing – Outside Mount

Shipping	Weights & Dimensions			Total
	L	W	H	
UFO16	650	650	500	Kgs 180
UFO24	900	900	600	250
UFO36	1300	1400	900	465
UFO48	1600	1600	900	600
UFO60	2400	2200	900	725
UFO80	2400	2400	900	915

INCLUDED AS STANDARD

The machine is supplied complete with the following items;

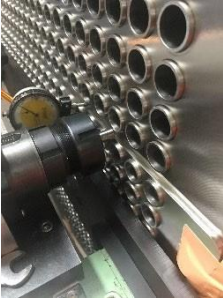
- Toolkit including tools and inserts
- Legs and feet to suit range
- Lifting Points
- Air filter lubricator – Air Drive only
- Hose connection fittings.
- Storage / shipping box
- Packing list and manual



Universal Flange Facing – Outside Mount

Accessories That Compliment the UFO Machines

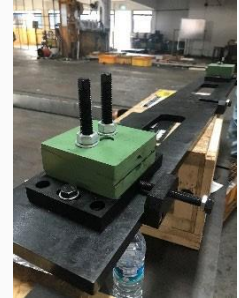
Setting Pins



Power Packs



Mounting Plates



Shipping Box



Light Duty Heat Exchanger
Milling Beam Series



Model 1M	Milling	Model 2M	Milling	Model 3M	Milling
UFO 1	LMB 1	UFO 2	LMB 2	UFO 3	LMB 3

Back Facing Slide



In addition, optional packages.

- Spares kit for the machines and drive motors
- Tooling sets for single point turning and milling slots.
- Choice of shipping box – Wood or Aluminum
- Choice of Machine body color for the machine to showcase your own brand

